

**2015**

**Augusta County**

**Board of Zoning Appeals**

**Annual Report**



# **Board of Zoning Appeals Members & Staff**

**Justine D. Tilghman – Chairwoman**

**George A. Coyner, II – Vice Chairman**

**Daisy A. Brown**

**Thomas H. Byerly**

**Steven F. Shreckhise**

**John R. Wilkinson – Secretary and Zoning Administrator**

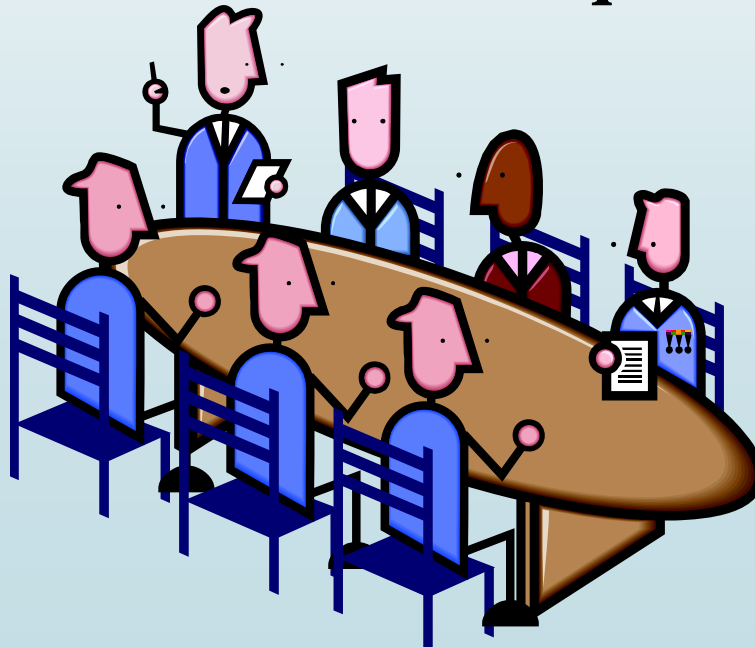
**Pat Morgan – County Attorney**

**Timothy K. Fitzgerald – Director of Community Development**



# MEETINGS

**The Augusta County Board of Zoning Appeals meets the first Thursday of every month. They had twelve (12) regular meetings in 2015. Prior to each meeting the Board views some of the sites in question.**



# **BOARD ATTENDANCE AT THE MEETINGS**

**Daisy A. Brown – 12 meetings**

**Thomas H. Byerly – 10 meetings**

**George A. Coyner, II – 12 meetings**

**Steven F. Shreckhise – 11 meetings**

**Justine D. Tilghman – 11 meetings**



**This report is respectfully submitted pursuant to Section  
15.2-2308 Code of Virginia.**

Attached is a chart showing the number of Public Hearings  
before the Board of Zoning Appeals by Magisterial District.

Also attached are two (2) graphs showing the number of  
Special Use Permits and Variances.

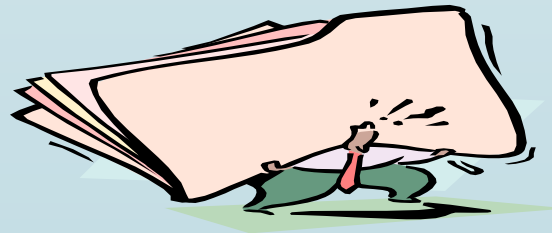


# Workload

**Special Use Permits**-The Board held forty-eight (48) Public Hearings on these requests. Forty-four (44) were approved with restrictive operating conditions, one (1) was denied, one (1) tabled until the January 7, 2016 meeting, and two (2) withdrawn.

**Variations**-The Board held five (5) Public Hearings on Variations. Two (2) Variations and one (1) Floodplain Variation were approved and two (2) were denied.

**Extensions of Time**-The Board issued twelve (12) Extensions of Time.



# Number of Public Hearings Before the Board of Zoning Appeals by Magisterial District.

## SPECIAL USE PERMITS

Beverley Manor – 5

Middle River – 4

North River – 11

Pastures – 5

Riverheads - 10

South River – 4

Wayne – 9

# Number of Public Hearing Before the Board of Zoning Appeals by Magisterial District.

## VARIANCES

Beverley Manor - 0

Middle River - 2

North River - 3

Pastures - 0

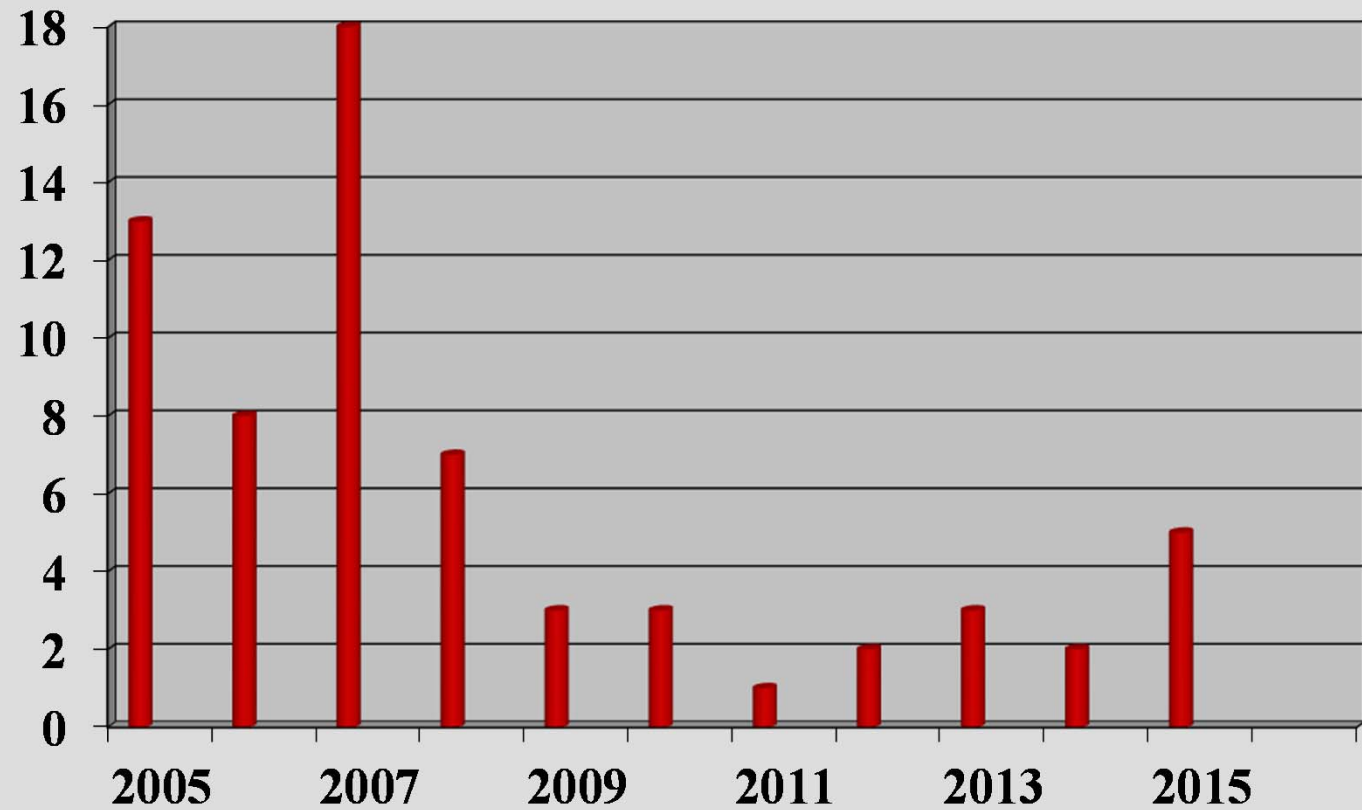
Riverheads - 0

South River - 0

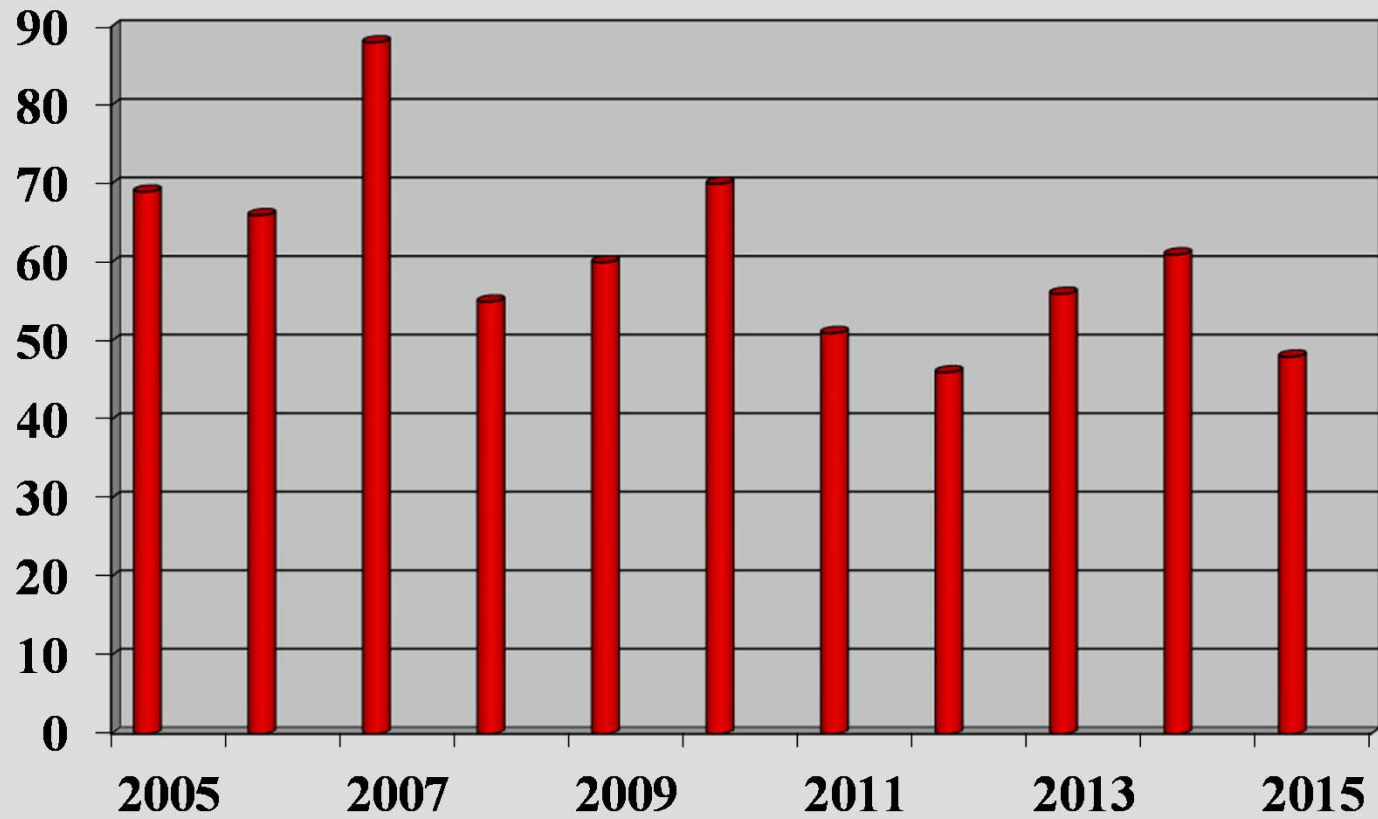
Wayne - 0



# VARIANCES



# SPECIAL USE PERMITS



# KENNELS

The Board had three (3) requests to operate a dog kennel operation. All of the requests were approved.

One (1) of those requests was to increase the number of dogs for the existing kennel and to add dog training and dog related events.

Special operating conditions were placed on each kennel.

